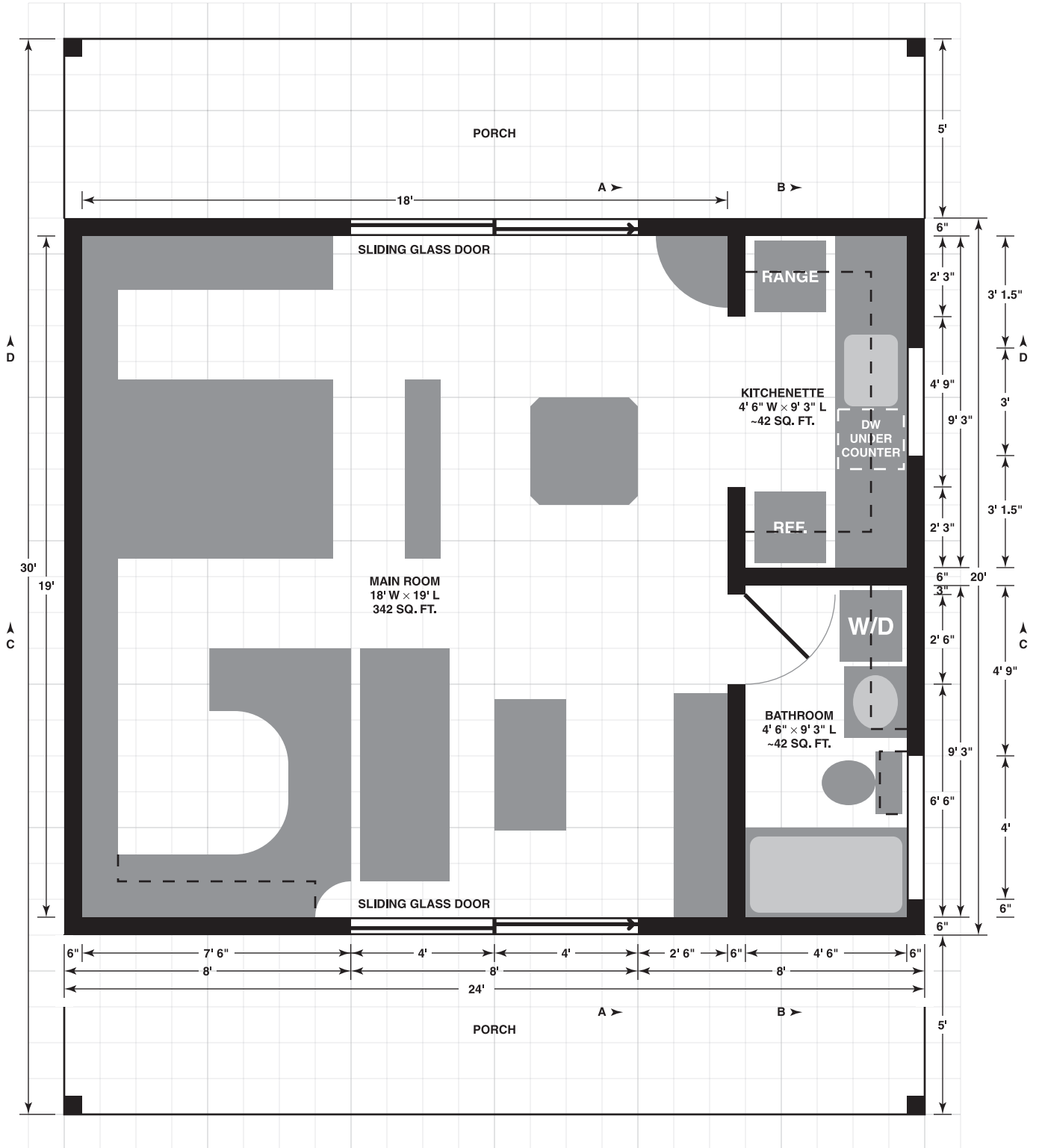


# The Essential Studio Cabin Deluxe

Design and artwork by Dave Bryant, © 2004

## INTERNAL PLAN VIEW

SCALE 1:48 (1" = 4')



# The Essential Studio Cabin Deluxe

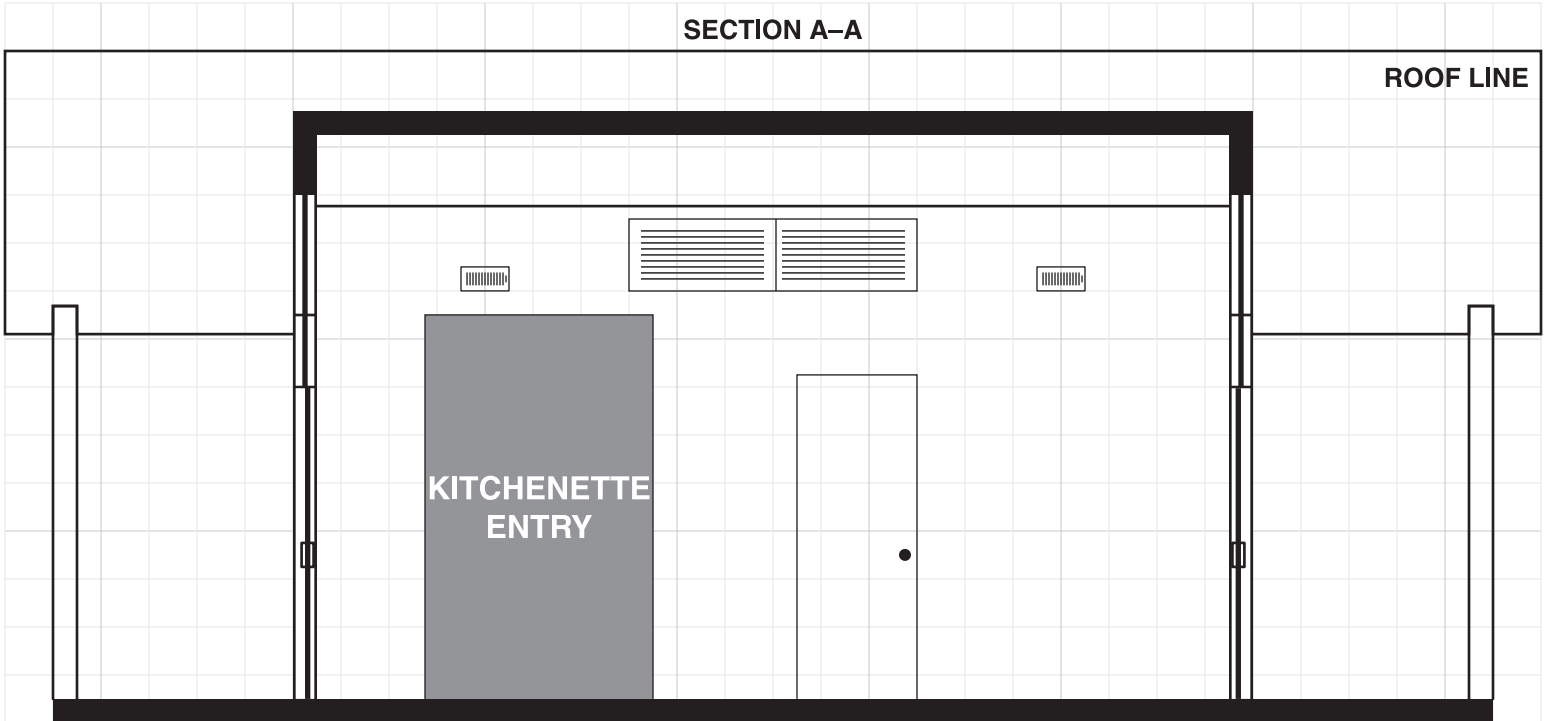
Design and artwork by Dave Bryant, © 2004

## INTERNAL SIDE ELEVATIONS

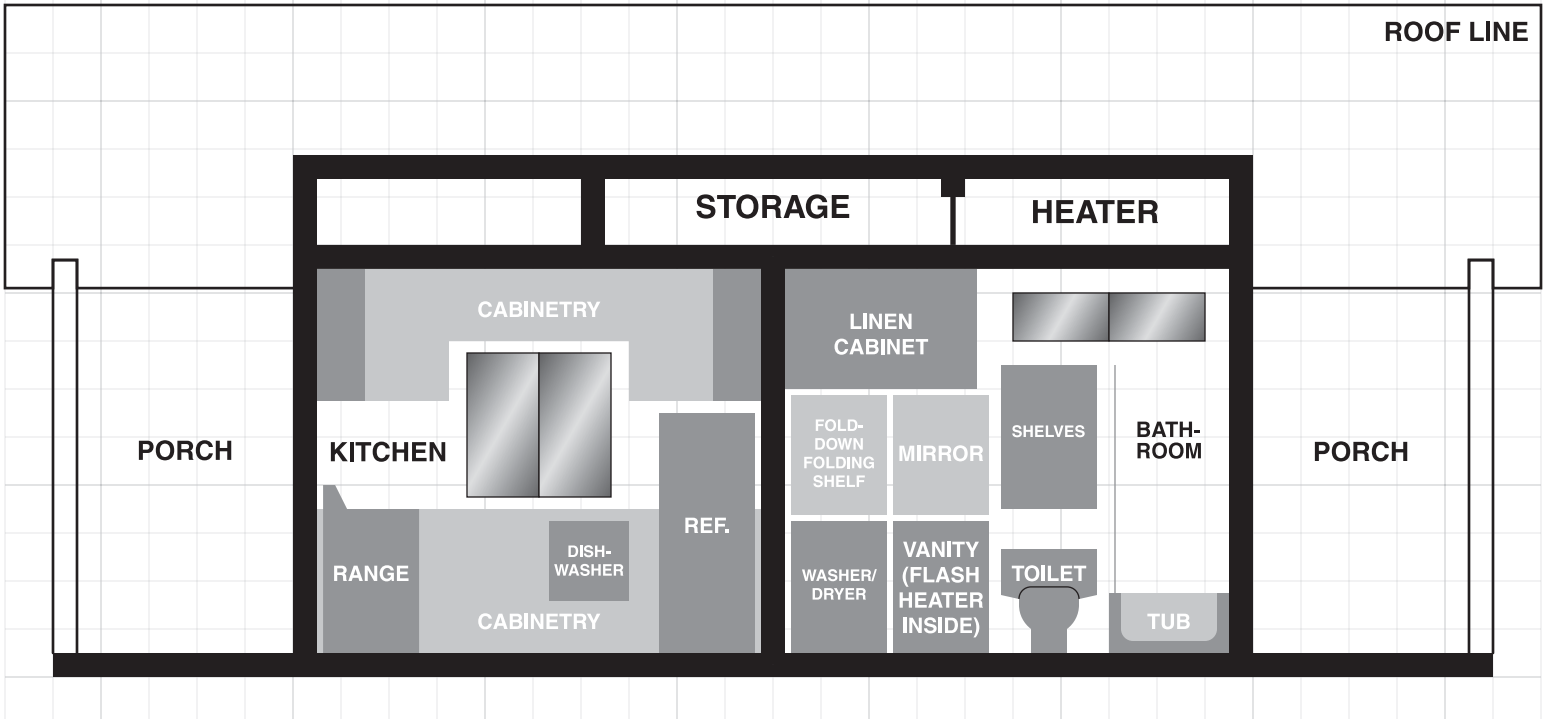
SCALE 1:48 (1" = 4')



SECTION A-A



SECTION B-B

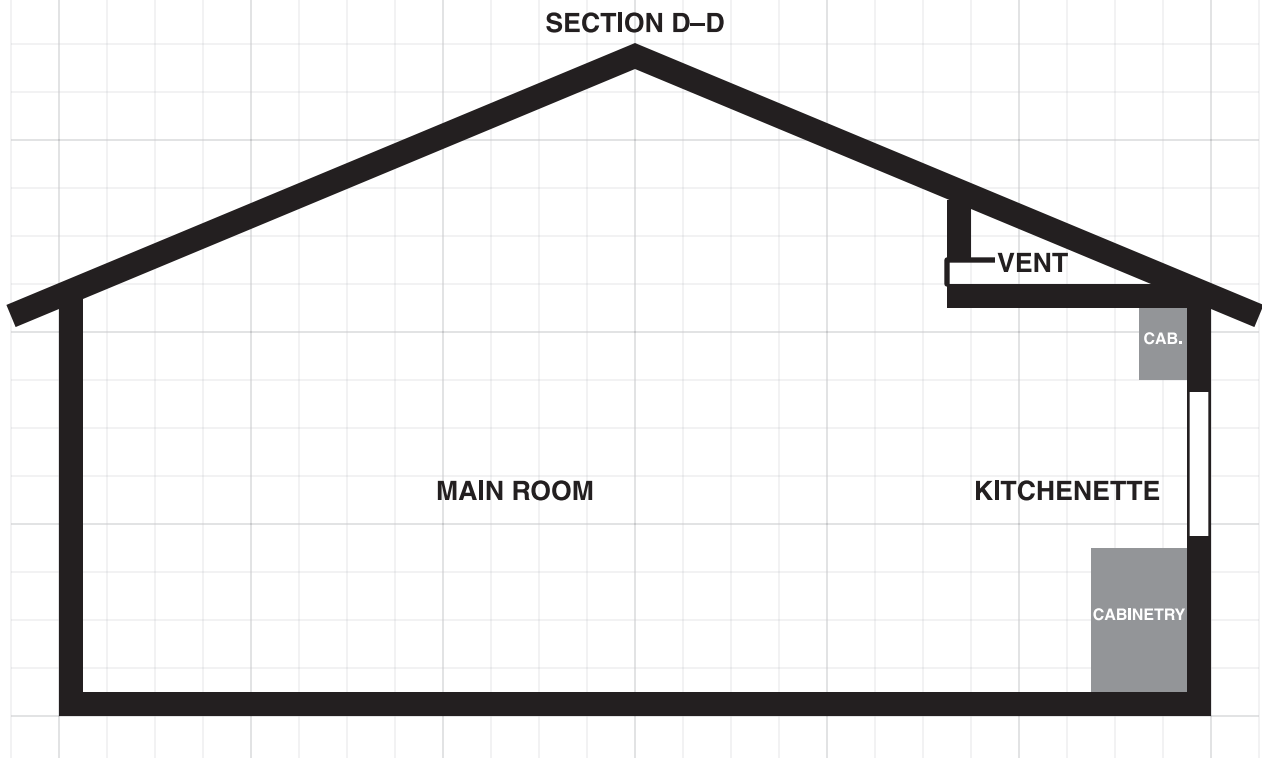
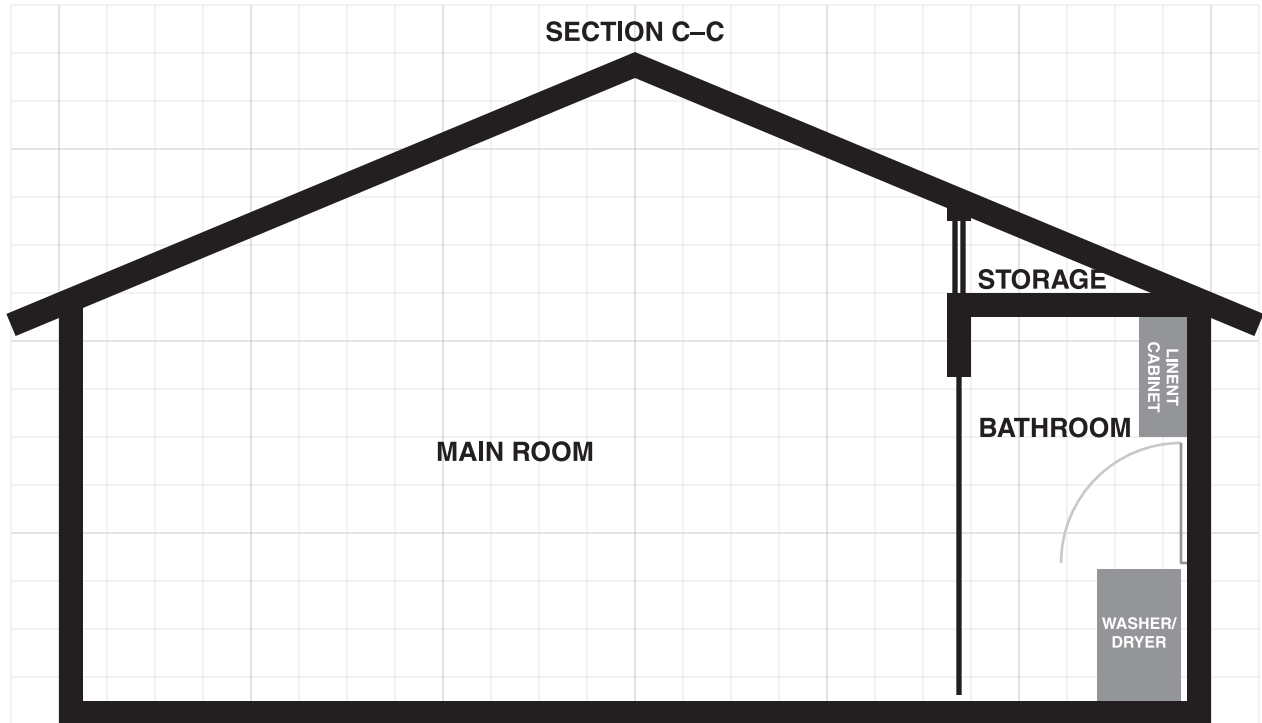
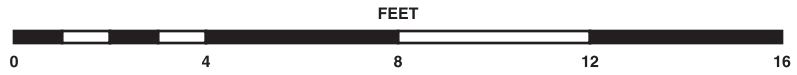


# The Essential Studio Cabin Deluxe

Design and artwork by Dave Bryant, © 2004

## INTERNAL END ELEVATIONS

SCALE 1:48 (1" = 4')



# The Essential Studio Cabin Deluxe

Design and artwork by Dave Bryant, © 2004

## EXTERNAL SIDE ELEVATIONS

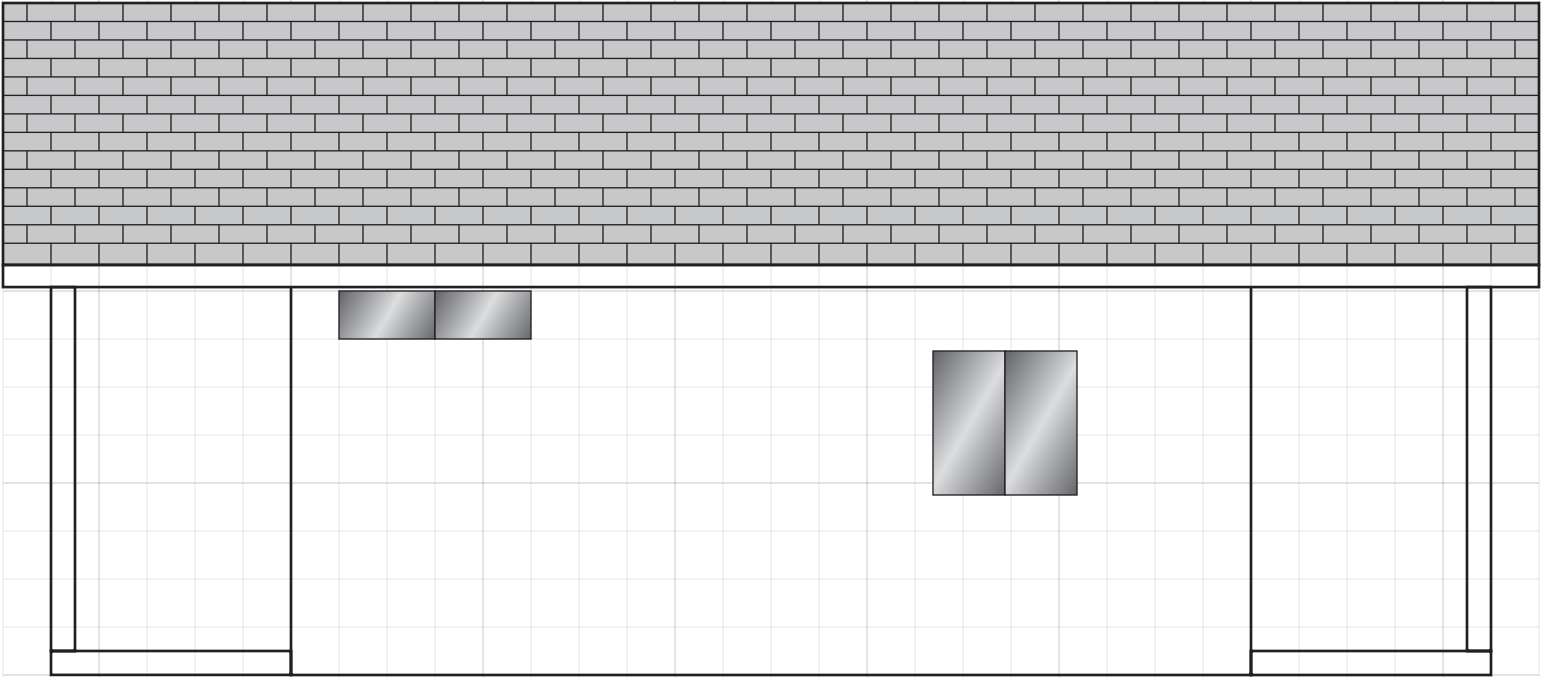
SCALE 1:48 (1" = 4')



### MAIN ROOM SIDE



### KITCHENETTE/BATHROOM SIDE

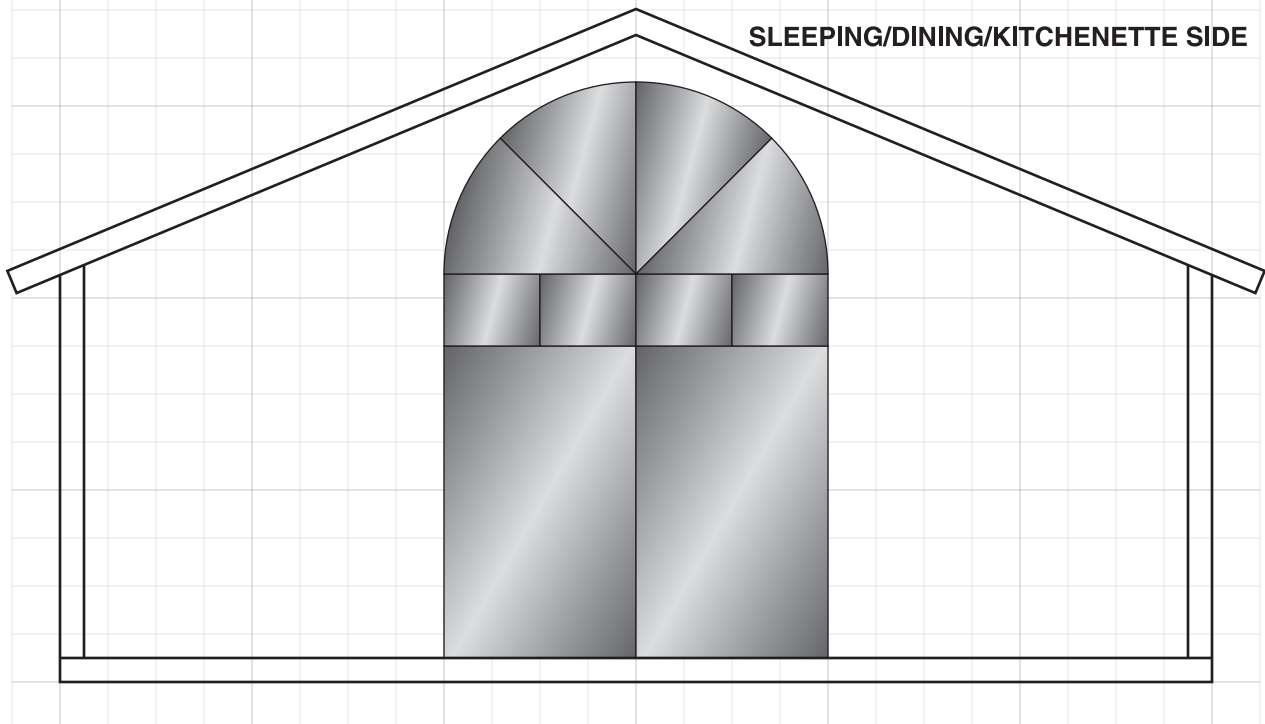
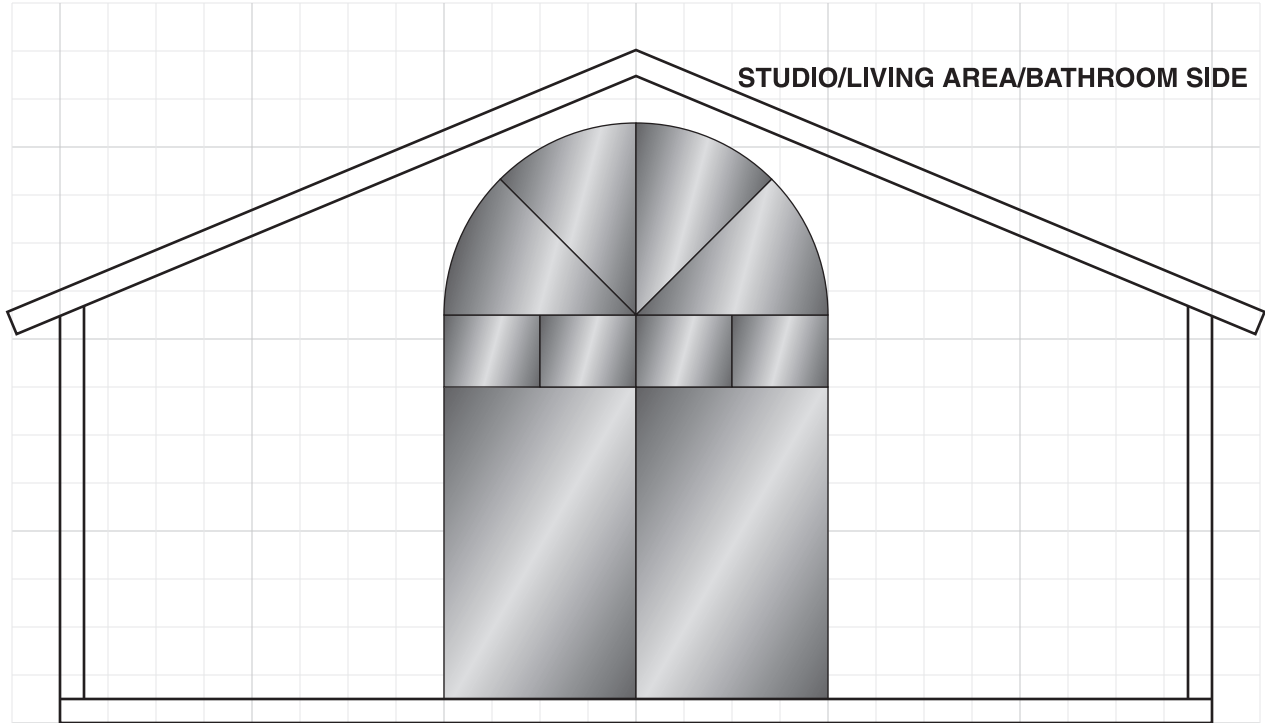
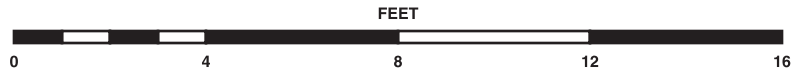


# The Essential Studio Cabin Deluxe

Design and artwork by Dave Bryant, © 2004

## EXTERNAL END ELEVATIONS

SCALE 1:48 (1" = 4')

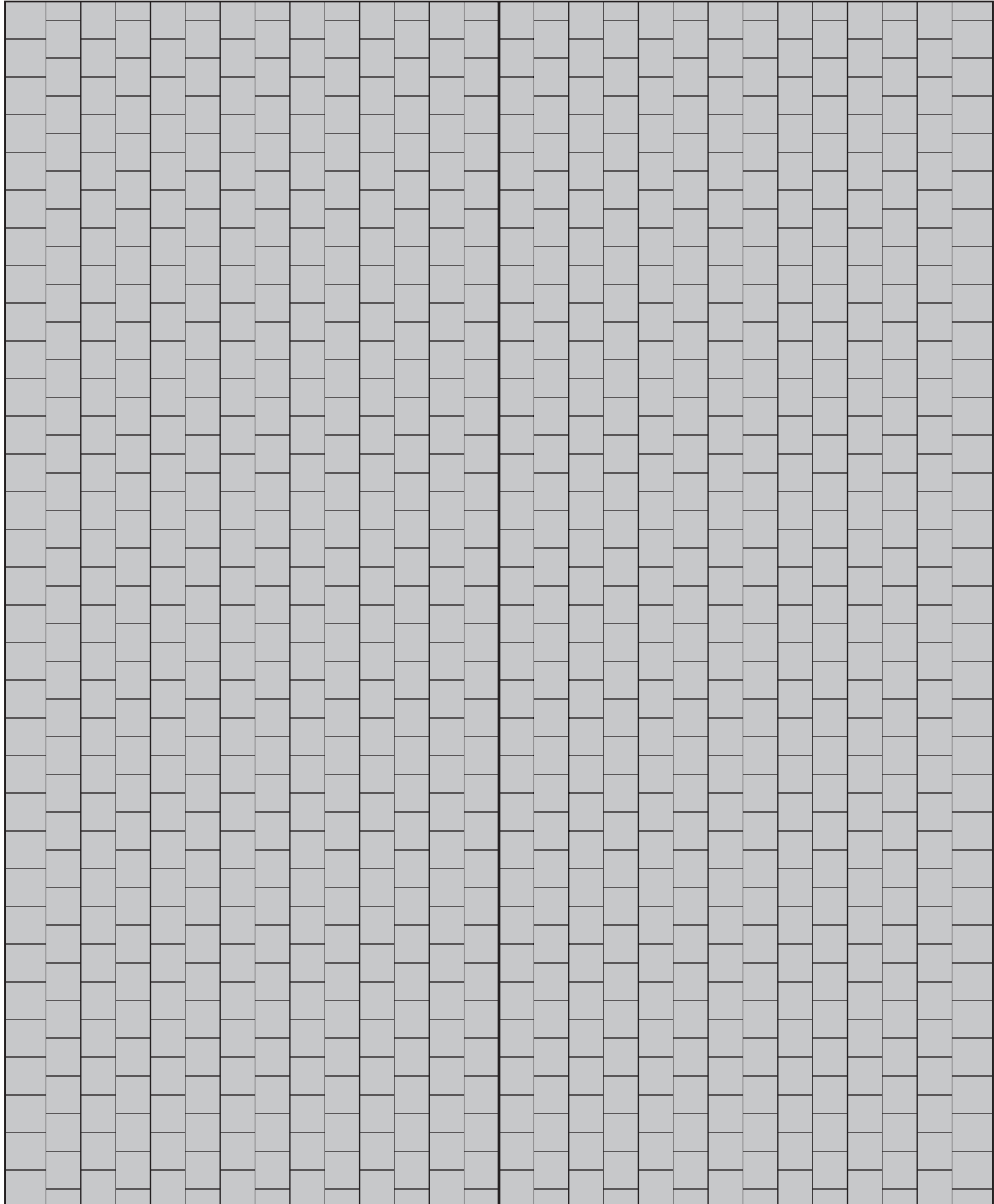


# The Essential Studio Cabin Deluxe

Design and artwork by Dave Bryant, © 2004

## EXTERNAL PLAN VIEW

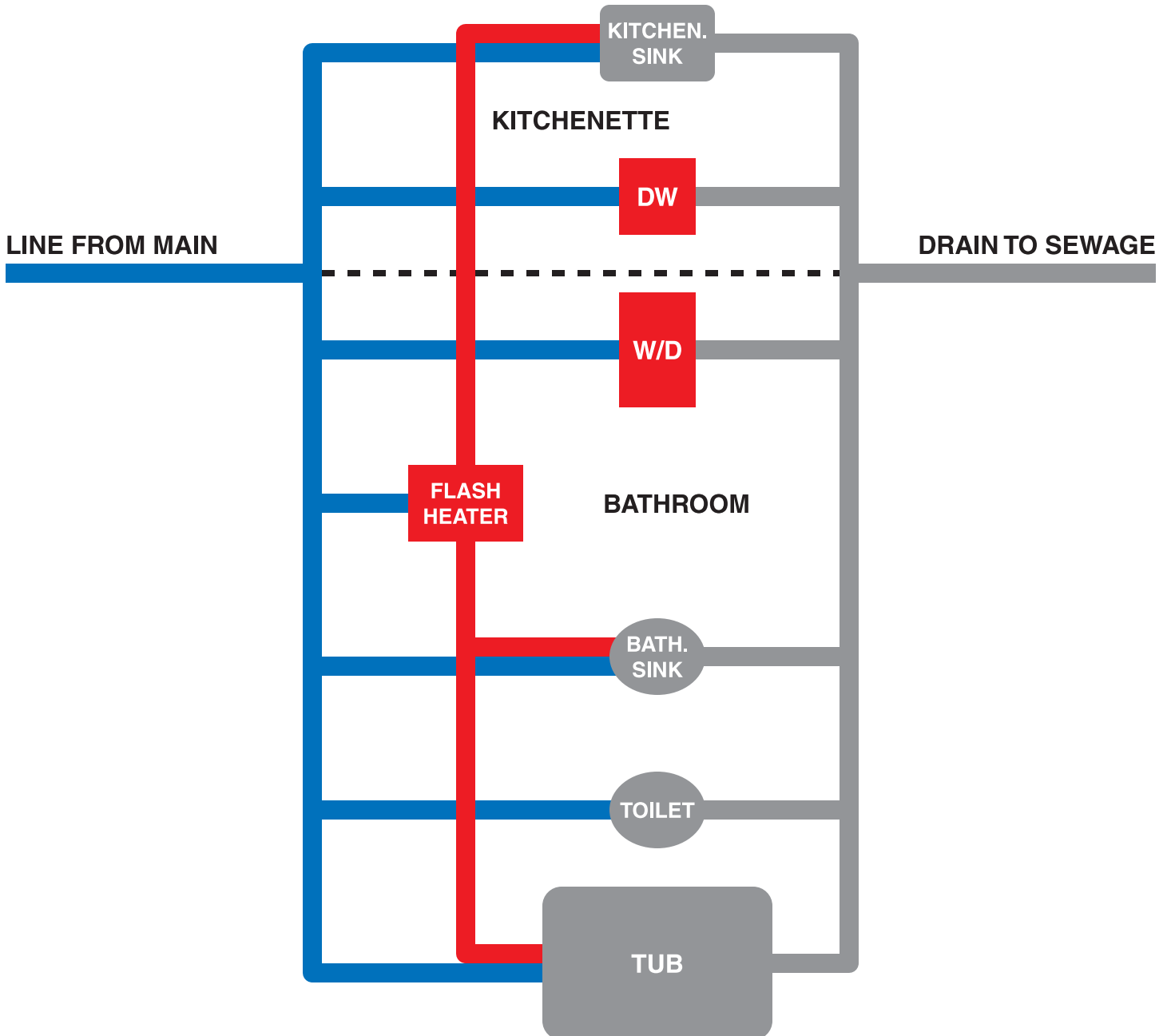
SCALE 1:48 (1" = 4')



# The Essential Studio Cabin Deluxe

Design and artwork by Dave Bryant, © 2004

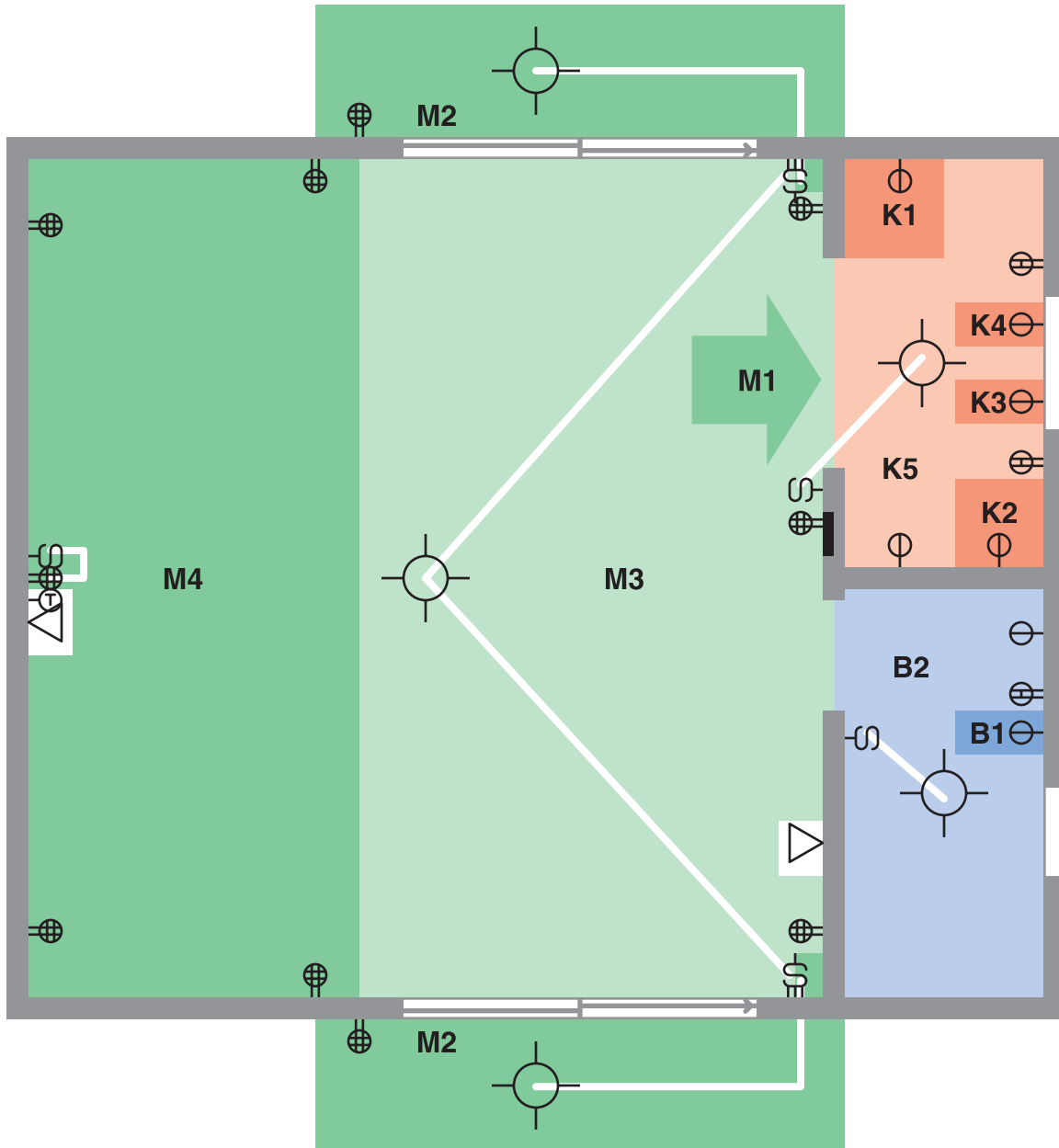
## PLUMBING SCHEMATIC



# The Essential Studio Cabin Deluxe

Design and artwork by Dave Bryant, © 2004

## ELECTRICAL SCHEMATIC



### ELECTRICAL CIRCUITS AND BREAKERS

- M1 (120 VAC 40 A): Furnace fan (over kitchenette)
- M2 (120 VAC 15 A): Two overhead lights, two quad outlets
- M3 (120 VAC 15 A): Overhead light/fan, three quad outlets
- M4 (120 VAC 15 A): Five quad outlets (one outlet switched)
- K1 (240 VAC 40 A): Compact range (oven-stove)
- K2 (120 VAC 15 A): Microwave oven
- K3 (120 VAC 15 A): Compact dishwasher
- K4 (120 VAC 15 A): Garbage disposer
- K5 (120 VAC 20 A): Overhead light, two dual outlets (GFCI)
- B1 (240 VAC 40 A): Flash water heater
- B2 (120 VAC 20 A): Overhead light, dual outlet (GFCI)
- G1 (120 VAC 15 A): Garage door opener, overhead light, two quad outlets
- U1 (120 VAC 15 A): Overhead light, quad outlet (in utility shed)

OUTLETS: ⊕ SINGLE ⊕ DUAL (GFCI) ⊕ QUAD

WALL SWITCHES: ⚡ SINGLE ⚡ DUAL

White rule connects switch to light it controls;  
light/fan in main room controlled by 2-way switches

⊕ OVERHEAD LIGHT  
(LIGHT/FAN IN MAIN ROOM)

⚡ BREAKER BOX ⚡ DATA JACK (CABLE/DSL)

⊕ THERMOSTAT